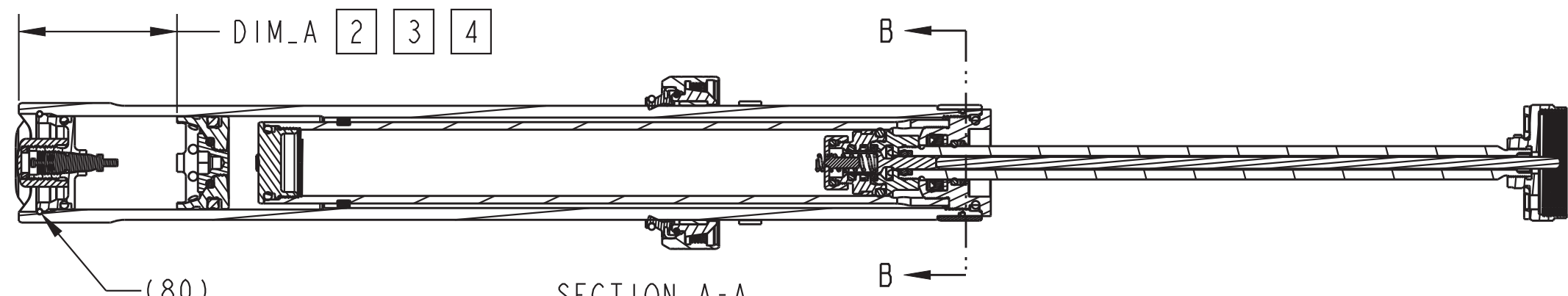


4

3

2

1



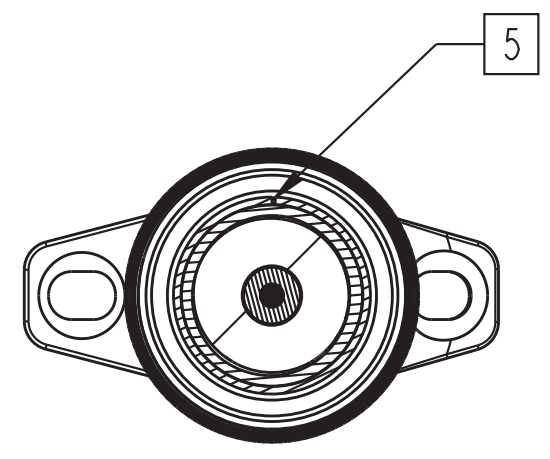
SECTION A-A
SCALE 1:1.25

Air Valve Parts: Ball [2.0mm OD], Grade 25 Steel, Chrome Plated

010-01-016

TORQUE:
30±5 IN.LB.

TORQUE:
90±5 IN.LB.



SECTION B-B
SCALE 1:1

GREASE:
THIN LAYER
OF SLICK HONEY

GREASE:
CLUMP LEVEL
OF SLICK HONEY

GREASE:
CLUMP LEVEL
OF SLICK HONEY

2025, TRANSFER, BASE LUG

2025, TRANSFER, BOTTOM OUT BUMPER

PRESSURE TUBE ASSY

2025, TRANSFER, LOWER BUSHING

LOWER BUSHING ENERGIZER O-RING

2025, TRANSFER, TRAVEL ADJUST TOP OUT WASHER

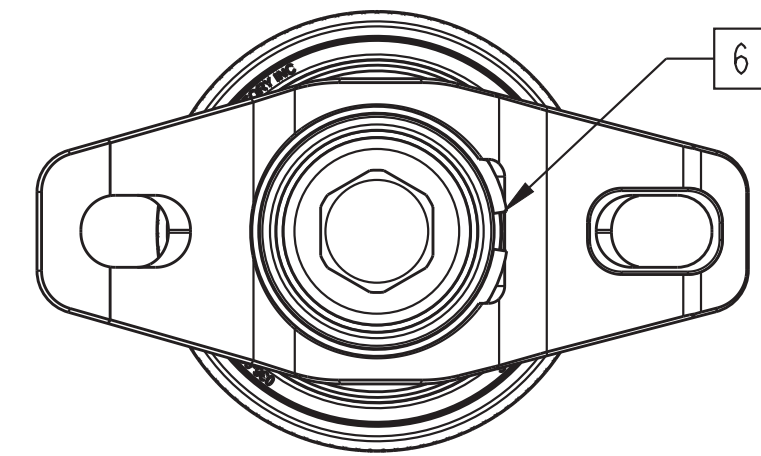
2025, TRANSFER, LOWER POST COLLAR ASSY

2025, TRANSFER, UPPER POST

2025, TRANSFER, IFP ASSY

TOP CAP ASSY

TOP CAP RETAINING RING



SCALE 1.5:1

1. FILL AT FULL EXTENSION USING
- 2 SET IFP HEIGHT PER TABLE.
- 3 ADD 0.5cc TO 1cc OF FLOAT FLUID TO IFP CHAMBER
- 4 SET IFP NITROGEN PRESSURE TO 325±10 PSI.
- 5 ORIENT BUSHING SPLIT TO SIDE OF POST
- 6 ORIENT RETAINING RING GAP TO RELIEF AT FRONT OF POST

TRAVEL		DIM_A ±.025
120mm	30.9/31.6	1.32
150mm	30.9/31.6	1.51
180mm	30.9/31.6	1.68
210mm	30.9/31.6	1.84
240mm	31.6	2.19
120mm	34.9	1.26
150mm	34.9	1.42
180mm	34.9	1.57
210mm	34.9	1.72
240mm	34.9	1.88

- PROPRIETARY -
THIS DOCUMENT CONTAINS CONFIDENTIAL, PROPRIETARY INFORMATION
THAT IS FOX PROPERTY. DO NOT DISCLOSE TO OR DUPLICATE
FOR OTHERS EXCEPT AS AUTHORIZED BY FOX.

FOX FOX Factory, Inc. Ph 831-768-1100
130 Hangar Way, Watsonville, CA 95076 USA Fax 831-768-9312

TITLE
2025, Transfer, Upper Post Assy

SIZE DWG. NO.

C

PLOT SCALE 1:1.5

SHEET 1 OF 1

4

3

2

1

ProE ASSEM